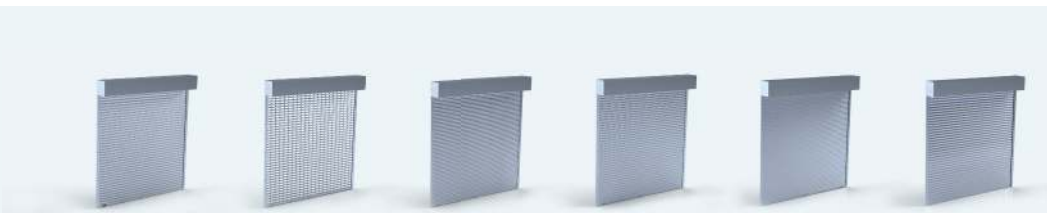


## Mini Roll Up Shutter

For smaller openings, the Mini Roll Up shutter has an easy to mount header and locking options for a variety of spaces. Crank opening, manual lift or electric motor options for operating the shutter available. Perfect for smaller storefronts, doors, kiosks and more.

## Roll Up Shutters to Protect Smaller Openings

### Mini Roll Up doors



EX59-P

EX59-V

RF 40

RF 55

EX 40

EX60

#### Features:

- ✓ Compact Coil box
- ✓ Face of Wall or Jamb Mount
- ✓ Manual Operation
- ✓ Slide or Cylinder Lock Bottom Bar
- ✓ Hood And Fascia Matching Color

#### Options

- ✓ Heavy Duty Bottom Bar
- ✓ Mortise Cylinders (Requires HD Bottom Bar)
- ✓ Heavy Duty Guides 3" [76]
- ✓ Crank Operation
- ✓ Electric Motor Operator

#### Electric Motor Option

- ✓ Crank Manual Override
- ✓ RTS Wireless Motor
- ✓ Decora Paddle Switch
- ✓ Remote Control (Telis)
- ✓ 4-in-1 Group Control

Protect display cases and secure kiosks and counters with our compact Mini Roll Up security grilles. They are perfect for smaller doorways and reception areas.



Mini Rolling Shutter

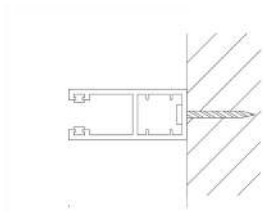
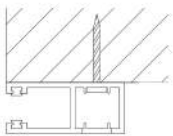
# Features And Options

## Model Color

	Clear Anodized	Dark Bronze Paint	Beige Paint	White Paint	Metallic Paint
RF 40		X	X	X	X
RF 55		X	X	X	X
EX 40	X				
EX 60	X	X	X	X	
EX 59-P	X	X		X	
EX 59-V	X	X		X	

## Mounting Type

- ✓ Face of Wall
- ✓ Between Jamb



## Rail Sizes

	2.125[54] x 0.875[22]	2.3125[59] x 1.125[29]	HD 3[76] x 1.125 [29] (Optional)
RF 40	X		X
RF 55		X	X
EX 40	X		X
EX 60		X	X
EX 59-P		X	X
EX 59-V		X	X

## Operation

- ✓ Manual Push/Pull
- ✓ Hand Crank
- ✓ Electric Operator In-Tube

## Coil Box Size to Rail Height

Box Size	RF 40	RF 55	EX 40	EX 60	EX 59-P	EX 59-V
6 [152]	38[965]	-	50[1270]	38[965]	-	-
7 [178]	69[1753]	30[762]	78[1981]	68[1727]	48[1219]	48[1219]
8 [203]	105[2667]	60[1524]	112[2845]	92[2337]	76[1930]	76[1930]
9 [229]	126[3200]	82[2083]	-	130[3302]	113[2870]	113[2870]
10 [254]	-	103[2616]	-	160[4064]	160[4064]	160[4064]
11 [279]	-	128[3251]	-	-	-	-

## Motor Options

- ✓ Key Switch – Open/Close using Standard Mortise, SFIC
- ✓ RTS – Wireless Open/Close using Telis remote
- ✓ Crank Motor Override (CMO) – Open/Close during Power Outage
- ✓ 4-In-1 Group Control – Connect 4 motors to open/close simultaneously, daisy chain Group Controls to open/close more than 4 operators



## Locking Bottom Bar

- ✓ Locking Coil side or Opposite Coil with Slide Lock or Cylinder.
- ✓ Heavy Duty Bottom Bar with Standard Mortise or SFIC.



LFIC



SFIC



StdMortise



Thumbturn



# Product Specifications



Series	Model	Description	Aluminum Thickness	Weight	Max Height	Max Size	Slat Height
Mini Rollup	RF40	Roll Formed Aluminum Foam Filled	0.017 [0.43]	0.9ft² [0.08m²]	126 [3200]	80ft² [7.4m²]	1.575 [40]
Mini Rollup	RF55	Roll Formed Aluminum Foam Filled	0.019 [0.48]	1.045ft² [0.1m²]	128 [3251]	105ft² [9.8m²]	2.165 [55]
Mini Rollup	EX40	Solid Aluminum	0.055 [1.4]	1.5ft² [0.14m²]	112 [2845]	80ft² [7.4m²]	1.575 [40]
Mini Rollup	EX60	Solid Aluminum	0.058 [1.47]	1.35ft² [0.13m²]	160 [4064]	120ft² [11.1m²]	2.362 [60]
Mini Rollup	EX59-P	Perforated Aluminum (Small)	0.078 [1.98]	1.8ft² [0.17m²]	160 [4064]	120ft² [11.1m²]	2.323 [59]
Mini Rollup	EX59-V	Perforated Aluminum (Large)	0.078 [1.98]	1.8ft² [0.17m²]	160 [4064]	120ft² [11.1m²]	2.323 [59]

### Small But Secure

With lots of choice in locking hardware and a fully enclosed header, the Mini Roll Up has an impressive ability to secure smaller openings. The header is designed to be almost tamper proof once installed.

### Easy To Use

Whether you choose manual, crank or motorized operation, the Mini Roll Up is easy to open and close. There are many options to choose from with motorized operation, including remote controls.

### Get The Look You Want

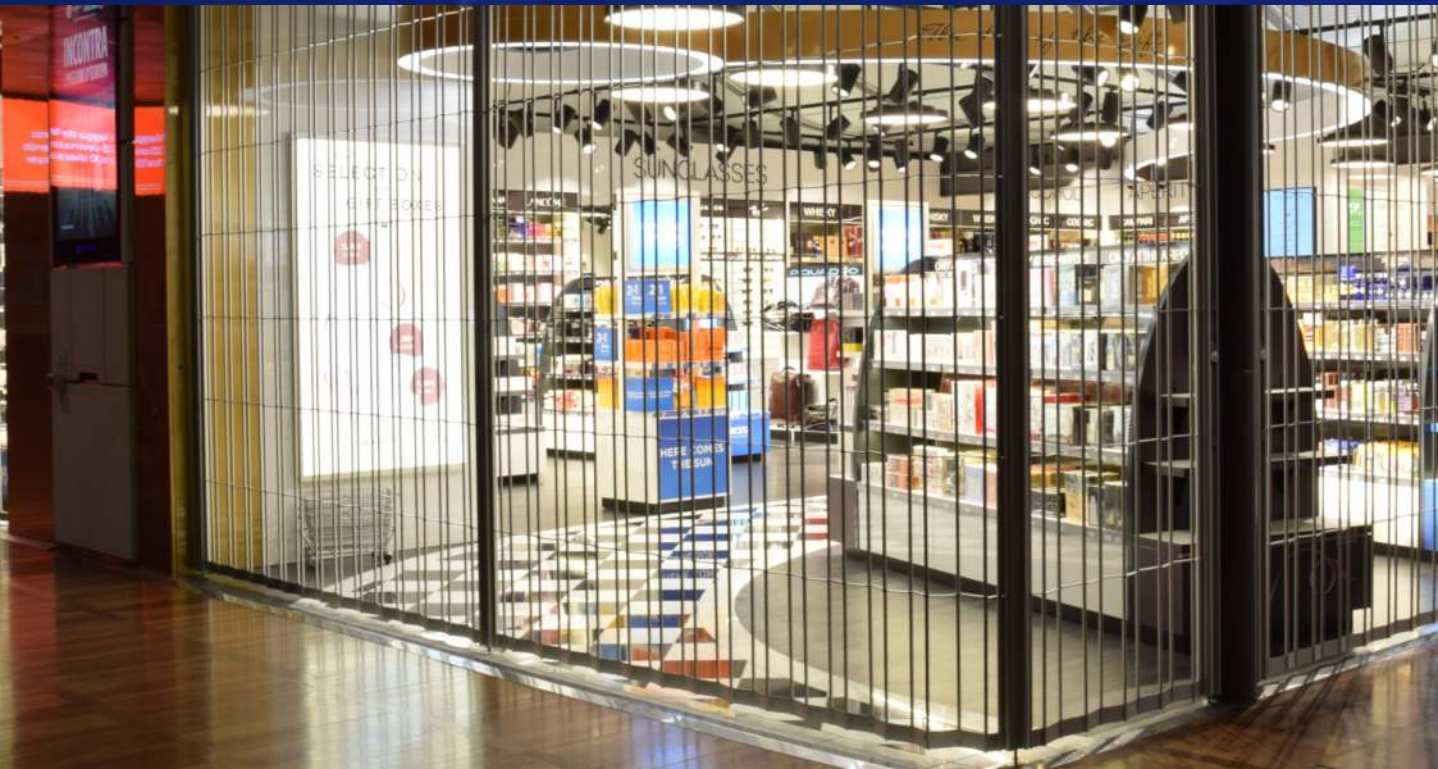
The Mini Roll Up is available in an incredible variety of aluminum or polycarbonate grille options, from solid to perforated and clear to opaque. Finishes include clear anodized aluminum and a variety of colors.



This compact design is perfect for smaller areas like kiosks, service counters, and display cases – even residential windows. But our clients have also used these on a number of stores with multiple smaller openings. This security solution is also extremely easy to install and use.







Call us at 1-800-663-4599

Monday to Friday, 8AM – 5PM Eastern.



## We're Open And Here To Help You!

From answering questions to creating custom CAD files for your project, we're here to save you time and money.

### Canada

**TELEPHONE**  
1-800-663-4599  
(613)-938-1222

**FAX**  
1-800-205-6665  
(613)-933-9189

**MAILING ADDRESS**  
P.O. Box 1296 Station Main  
Cornwall, Ontario  
K6H 5V4

### USA

**TELEPHONE**  
1-800-663-4599  
(613) 938-1222

**FAX**  
1-800-205-6665  
(613) 933-9189

**MAILING ADDRESS**  
P.O. Box 627  
Massena, N.Y.  
13662-0627

### Australia

**TELEPHONE**  
(03) 9739 5222

**FAX**  
(03) 9739 5599

**MAILING ADDRESS**  
58 Industrial Park Drive  
Lilydale VIC 3140

### Greater Toronto Area

**TELEPHONE**  
905-639-9472

**MAILING ADDRESS**  
4150 Morris Drive  
Burlington, Ontario  
L7L 5L6

[www.dynamicclosures.com](http://www.dynamicclosures.com)



INNOVATIVE DESIGN. INTELLIGENTLY SIMPLE.